



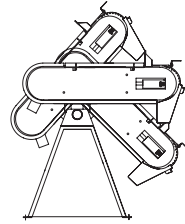
The ORIGINAL Industrial Belt Grinder



Scantool 75
Basic 3" Grinder



Scantool 150X
6" Grinder shown with dust extractor



Scantool 3" and 6" industrial belt grinders have simple and practical operation and feature the following:

- ❖ Remove material rapidly without vibration
- ❖ Contact wheel provides safe consistent grinding area
- ❖ Tool free belt change allows operator to quickly match abrasive to the application
- ❖ Working height adjusts to accommodate operator and material
- ❖ Top grinding table supported by graphite pad increases versatility
- ❖ Adjustable tool rest and eye shield
- ❖ Emergency stop
- ❖ UL approved no-volt release with built in safety switch
- ❖ Five Year warranty on motor
- ❖ Detachable spark arrester for easy cleaning
- ❖ Tool free adjustment of belt tracking
- ❖ Available with optional powered dust extraction
- ❖ Manufactured in Denmark

Grinder Model Selection

Models shown in **Blue** include dust extraction system

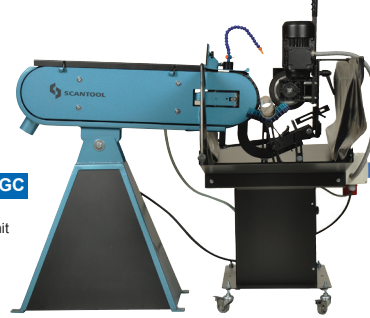
Model	Part Number	Grinding Belt	Voltage	RPM	Contact Wheel	Motor	Grinding Table	Measurement L-W-H
75	430 11 2131	3" x 79"	220V 1ph	3350	8" x 3"	4.1 HP	24"	40" x 20" x 40"
75	430 03 2131	3" x 79"	220V 3ph	3350	8" x 3"	4.1 HP	24"	40" x 20" x 40"
75	430 43 2130	3" x 79"	480V 3ph	3350	8" x 3"	4.1 HP	24"	40" x 20" x 40"
75X	430 03 2231	3" x 79"	220V 3ph	3350	8" x 3"	4.1 HP	24"	40" x 20" x 40"
75X	430 03 4141	3" x 79"	480V 3ph	3350	8" x 3"	4.1 HP	24"	40" x 20" x 40"
150	430 03 4140	6" x 79"	220V 3ph	3350	8" x 6"	4.8 HP	24"	40" x 24" x 40"
150	430 23 4160	6" x 79"	480V 3ph	3350	8" x 6"	4.8 HP	24"	40" x 24" x 40"
150X	430 03 4240	6" x 79"	220V 3ph	3350	8" x 6"	4.8 HP	24"	40" x 24" x 40"
150X	430 23 4250	6" x 79"	480V 3ph	3350	8" x 6"	4.8 HP	24"	40" x 24" x 40"

Centerless Belt Grinder & Polishing



Scantool 75CG

3" Grinder with Dry Centerless Unit Complete



Scantool 75CGC

3" Grinder with Wet Centerless Unit Complete

In addition to the standard grinder features listed to the left, all centerless grinders feature the following:

- ❖ Centerless attachment can be mounted on all belt grinders with a 3" x 79" grinding belt
- ❖ Grinds and polishes all pipes or tubes with diameters between 7/8" – 3" Ø
- ❖ Unique setup allows machine to remain a belt grinder while centerless grinding attachment is mounted
- ❖ Contact wheel and flat grinding surface on top available even with attachment on machine
- ❖ Multiple grit belts may be needed to attain final finish required

Centerless Grinder Model Selection

Models shown in **Blue** include dust extraction system

Model	Part Number	Grinding Belt	Voltage	RPM	Contact Wheel	Motor	Grinding Table	Measurement L-W-H
75CG (Dry centerless)	430 03 2137	3" x 79"	220V 3ph	3350	8" x 3"	0.4 HP	24"	48" x 28" x 45"
75CG (Dry centerless)	440 03 2138	3" x 79"	480V 3ph	3350	8" x 3"	0.4 HP	24"	48" x 28" x 45"
75CGX (Dry centerless)	430 03 2237	3" x 79"	220V 3ph	3350	8" x 3"	0.4 HP	24"	48" x 28" x 45"
75CGX (Dry centerless)	430 03 2239	3" x 79"	480V 3ph	3350	8" x 3"	0.4 HP	24"	48" x 28" x 45"
75CGC (Wet centerless)	430 23 2149*	3" x 79"	220V 3ph	3350	8" x 3"	0.4 HP	24"	59" x 48" x 48"
75CGC (Wet centerless)	430 23 2155*	3" x 79"	480V 3ph	3350	8" x 3"	0.4 HP	24"	59" x 48" x 48"

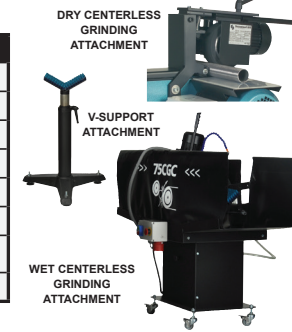
*Not for use with X models

www.industrialbeltgrinders.com

Centerless Grinder Attachments

Fits Model	Part Number	Description	Voltage
75	10 55 991	Dry Centerless Grinding Attachment	220V 3ph
75	10 55 995	Dry Centerless Grinding Attachment	480V 3ph
75X	10 55 990	Dry Centerless Grinding Attachment	220V 3ph
75X	10 55 996	Dry Centerless Grinding Attachment	480V 3ph
75	85 01 290*	Wet Centerless Grinding Attachment	220V 3ph
75	85 01 292*	Wet Centerless Grinding Attachment	480V 3ph
75CG / 75CGX / 75CGC	10 56 190	Teflon Grinding Support (Required for smaller diameters 1/4" – 7/8")	NA
ALL	85 01 376	V-Support Attachment	NA

*Not for use with X models



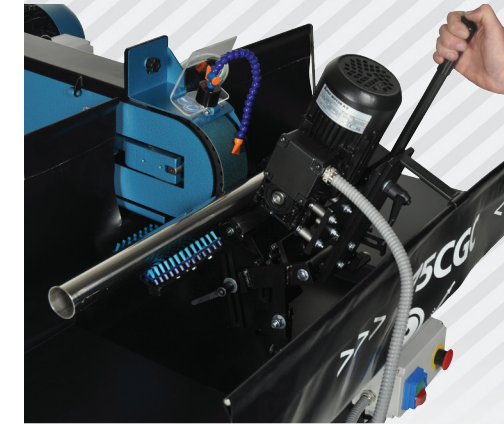
Belt travel adjustment - Easy to adjust.



Tool free quick belt change - Without removing guards.



Large surface table.



About This Brochure

We have tried to make this brochure comprehensive and factual. We reserve the right to make changes at any time without notice, to prices, colors, materials, equipment, specifications, models and availability. Brochure may have been updated since the time of printing.

Grinding Belts

Zirconia Alumina

Zirconia is more durable than aluminum oxide, and best for medium- to heavy-material removal. Commonly used on carbon steels, aerospace alloys, nickel alloys, aluminum, cast iron, forgings, and some stainless steels.

Ceramic

Ceramic is cooler cutting and more durable than natural aluminum-based products, ceramic provides a sharp, high-purity grain. Commonly used for precision grinding of steels, hard alloys and exotic materials.

3" Zirconia Alumina Belts (3" x 79")	
Part Number	Grit
0217040	40 Grit
0217060	60 Grit
0217080	80 Grit
0217100	100 Grit
0217120	120 Grit
0217150	150 Grit
0217220	220 Grit
0217320	320 Grit
0217400	400 Grit

6" Zirconia Alumina Belts (6" x 79")	
Part Number	Grit
0223040	40 Grit
0223060	60 Grit
0223080	80 Grit
0223100	100 Grit
0223120	120 Grit
0223150	150 Grit
0223220	220 Grit
0223320	320 Grit
0223400	400 Grit

3" Ceramic Belts (3" x 79")	
Part Number	Grit
0217060CR	60 Grit
0217080CR	80 Grit
6" Ceramic Belts (6" x 79")	
Part Number	Grit
0223060CR	60 Grit
0223080CR	80 Grit

Exclusive North American Representative

CML USA, Inc.

3100 Research Parkway

Davenport, IA 52806

Ph. 563-391-7700 • Fax 563-391-7710

info@industrialbeltgrinders.com

Home of Grinders

industrialbeltgrinders.com

Tube & Pipe Notcher

Scantool 75RB

3" Grinder with Notcher Complete



Scantool 150RBX

6" Grinder with Notcher Complete shown with dust extractor



All notchers feature the following:

- ❖ Quickly create perfect professional notches at any angle to 60°
- ❖ Ideal for hand railing, chassis and roll cages, fences and gates, furniture frames, marine rails and arches, tubing and plumbing for restaurant and dairy
- ❖ Replaces outdated notching methods of using hole saws, end mills, grinding wheels and flame cutting
- ❖ Uses premium abrasive belts for a wide range of materials including; carbon steel, stainless steel, Inconel, chrome moly, aluminum and titanium
- ❖ Top mounted deburring surface
- ❖ Pipe and tube size rollers available
- ❖ Tool free belt changeover

Tube & Pipe Grinder - Notcher Model Selection

Models shown in **Blue** include dust extraction system

Model	Part Number	Grinding Belt	Voltage	Contact Wheel	Motor	Grinding Table	Tube Capacity	Pipe Capacity
75RB	430 23 2147	3" x 89"	220V 3ph	8" x 3"	4.1 HP	24"	¾" - 2"	¾" - 1½"
75RB	430 23 2146	3" x 89"	480V 3ph	8" x 3"	4.1 HP	24"	¾" - 2"	¾" - 1½"
75RBX	430 23 2246	3" x 89"	220V 3ph	8" x 3"	4.1 HP	24"	¾" - 2"	¾" - 1½"
75RBX	430 23 2248	3" x 89"	480V 3ph	8" x 3"	4.1 HP	24"	¾" - 2"	¾" - 1½"
150RB	430 23 4157	6" x 89"	220V 3ph	8" x 6"	4.8 HP	24"	¾" - 3"	¾" - 2"
150RB	430 23 4159	6" x 89"	480V 3ph	8" x 6"	4.8 HP	24"	¾" - 3"	¾" - 2"
150RBX	430 23 4265	6" x 89"	220V 3ph	8" x 6"	4.8 HP	24"	¾" - 3"	¾" - 2"
150RBX	430 23 4266	6" x 89"	480V 3ph	8" x 6"	4.8 HP	24"	¾" - 3"	¾" - 2"

Notcher Attachment

Fits Models	Part Number	Tube Capacity	Pipe Capacity
75/75X	10 56 200	¾" - 2"	¾" - 1½"
150/150X	10 56 201	¾" - 3"	¾" - 2"

Tube & Pipe Notcher Rolls

(Information for Scantool notcher models 75RB/75RBX and 150RB/150RBX to the left)

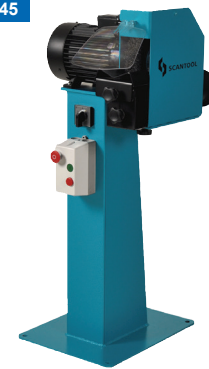
TUBE SIZE	75RB/75RBX Part Number	150RB/150RBX Part Number	PIPE SIZE	75RB/75RBX Part Number	150RB/150RBX Part Number
1"	020 16 T1000	020 17 T1000	¾"	020 16 P0750	020 17 P0750
1¼"	020 16 T1250	020 17 T1250	1"	020 16 P1000	020 17 P1000
1½"	020 16 T1500	020 17 T1500	1¼"	020 16 P1250	020 17 P1250
1¾"	020 16 T1625	020 17 T1625	1½"	020 16 P1500	020 17 P1500
1¾"	020 16 T1750	020 17 T1750	2"	NA	020 17 P2000
2"	020 16 T2000	020 17 T2000			
2¼"	NA	020 17 T2250			
2½"	NA	020 17 T2500			
3"	NA	020 17 T3000			



Deburring Machine

Scantool TD45

Deburring Machine



Scantool TD45X

Deburring Machine shown with dust extractor



All Scantool deburring machines feature the following:

- ❖ Remove material rapidly without vibration
- ❖ Adjustable tool rest and eye shield
- ❖ Workholding "V" platform
- ❖ Fixed work height
- ❖ Pedestal mounted
- ❖ Emergency stop
- ❖ Five Year warranty on motor

Deburring Machine Model Selection

Models shown in **Blue** include dust extraction system

Model	Part Number	Voltage	Motor
TD45	002 05 234	480V 3ph	3.0 HP
TD45X	002 05 054	480V 3ph	3.0 HP

563-391-7700



- Reduce grinding time
- Safe vibration free grinding
- Adjustable work height
- Quiet, reliable operation
- 5 year motor warranty
- Manufactured in Denmark



BELT GRINDERS
CENTERLESS GRINDERS • NOTCHERS
DEBURRING MACHINES

www.industrialbeltgrinders.com